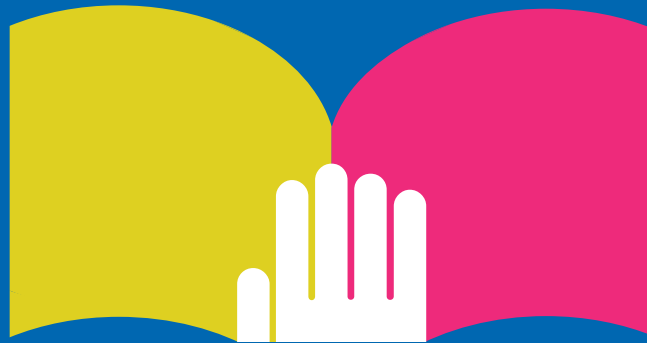


Butler County Services & Agencies



Butler County
www.co.butler.pa.us

Midwestern Intermediate Unit IV
www.miu4.k12.pa.us



Compiled & published by Midwestern Intermediate Unit IV

Butler County Service Organizations & Agencies

Agency	Page Number
Association for Children with Learning Disabilities	1
Association for Retarded Citizens (ARC)	1
Autism Society Of America	1
Blindness & Visual Services in PA	2
Butler Area & Rural Transit (BRAT)	2
Butler County Assistance Office DPW	2
Butler County Association for the Blind	3
Butler County Career Track	3
Butler County Children & Youth	3
Butler County Community College Adult Literacy Program	4
Butler County Cooperative Extension of Penn State	4
Butler County Children’s Center, Inc.	5
Butler County Family YMCA	5
Butler County Mental Health/Mental Retardation	5
Butler County Red Cross	5
Butler County Authority “The Bus”	6
Career Opportunities for the Disabled	6
Center for Community Resources, Inc.	6
Down Syndrome Center at Children’s Hospital	7
Homeless Assistance Program (HAP)	7
Housing Authority of Butler County	8
Irene Stacy Community Mental Health Center	8
Lifesteps	8
Mental Health Association of Butler County	8
Midwestern Intermediate Unit IV	9
Office for the Deaf and Hearing Impaired	9
Office of Vocational Rehabilitation	10
Salvation Army	10
Social Security Administration	10
Spina Bifida Association of Western PA	11
WIC Program Adiago Health	11

Association for Children With Learning Disabilities (ACLD)

28 Pine Street
Sharon, PA 16146

Geographic Area Served: Butler County and surrounding areas

Telephone: 724-346-5887

Office Hours: Phone answered 24 hours a day/Hours open are program specific

Services: Advocacy for learning disabled children and their families to insure appropriate education

Placement: Peer counseling from parent to parent of learning disabled child; tutoring program – year round for persons with learning disabilities; parent support group meetings

Fee Policy: Small fee for tutoring

Eligibility: Open to those with learning disabilities and their families

Association for Retarded Citizens - Butler County (ARC)

Pullman Commerce Center
112 Hollywood Drive Suite 202
Butler, PA 16001

Geographic Area Served: Butler County

Telephone: Association Office: 724-282-1500
Vocational Program: 724-283-3300
Residential Program: 724-283-7441

Office Hours: Monday – Friday: 8:00 am - 4:00 pm

Services: Sheltered employment; integrated competitive employment placement; community living arrangements; family living programs; advocacy

Fee Policy: Free

Eligibility: Referral from Base Service Unit (BSU) or Office of Vocational Rehabilitation (OVR)

Autism Society of America – Midwestern PA Chapter

Human Services Center
130 West North Street
New Castle, PA 16101

Geographic Area Served: Butler, Lawrence and Mercer Counties

Telephone: 724-658-3578

Office Hours: Monday – Friday: 9:00 am - 5:00 pm

Website: www.autism-society.org

Services: Support groups for parents, family members and professionals who deal with Autistic individuals; Provides advocacy to promote appropriate education and services for Autistic individuals; Promotes the welfare of Autistic individuals in the community through presentations; Library containing books, journals, audio-visual materials concerning aspects of Autism (considered to be one of the best in the state); monthly meetings held at the Human Services Center

Fee Policy: Small fee for tutoring

Eligibility: Open to those with learning disabilities and their families

Blindness & Visual Services in Pennsylvania

District Office (Pittsburgh)
G-10 Kossman Building
Forbes & Stanwix Streets
Pittsburgh, PA 15222

Geographic Area Served: Butler County

Telephone: 724-656-5240 or 800-622-2842

Services: *Vocational Rehabilitation Program* includes basic education and rehabilitation, mobility training and employment preparation.

Business Enterprise Program offers special management skills that enable people to operate their own food service facilities or other small businesses independently in a commercial, industrial or governmental location.

Social Services helps individuals cope with the activities of daily living: In-home services to help maintain safe living; Counseling; Housing; Life-skill to perform daily; and Transportation to receive social and medical services.

Blindness Prevention Program consists of services such as vision screening, glaucoma screening, public education, and informational services including eye-safety education in schools and industry.

Children's Services assists children who are blind or visually impaired achieve their maximum sensory, cognitive and social development.

Butler Area & Rural Transit (BART)

113 East Cunningham Street
Butler, PA 16001

Geographic Area Served: Butler County

Telephone: 724-283-1783

Office Hours: Monday – Friday: 7:00 am - 5:00 pm

Website: <http://butlertransitauthority.com>

Services: BART is a shared ride transportation program providing transportation to structured workshops and to employment for MH/MR clients. BART is a shared ride and does not service all areas of Butler County every day.

Fee Policy: Client fees are usually paid for through the MH/MR office of the Community Action Program; however, we do have some clients who ride as a fare. All new clients or current clients who wish to increase services must be approved by the MH/MR office.

Eligibility: As stated above, for the client to have their fee paid for by Human Services Department Fund or CSBG, they must be approved by the MH/MR office

Butler County Assistance Office Department of Public Welfare

108 Woody Drive
Butler, PA 16001

Geographic Area Served: Butler County

Telephone: 724-284-8844

Office Hours: Monday – Friday: 7:30 am - 5:00 pm

Butler County Assistance Office Department of Public Welfare continued

Services: *Public Assistance Income Maintenance Payments* – Butler County residents may be eligible for cash grants if they are in need. “Need” may exist if income, assets and other means of support are less than the Department of Welfare standard for basic living requirements;

- Medical Assistance
- Food Stamp Program
- Social Services

Eligibility: Residents of Butler County refer to office for eligibility check; consideration is on an individual basis.

Butler County Association for the Blind

322 North Cedar Street
Butler, PA 16003

Geographic Area Served: Butler County

Telephone: 724-287-4059

Office Hours: Monday – Friday: 8:30 am - 4:30 pm

Website: <http://www.theblindassociation.org/about>

Services: Special services for the blind; sheltered employment for individuals with disabilities; prevention of blindness programs; educational service for community

Eligibility: Call for Information

Butler County Career Track

112 Hollywood Drive, Suite 104
PO Box 951
Butler, PA 16001

Geographic Area Served: Butler County

Telephone: 724-431-4043 or 724-284-8147

Office Hours: Monday – Friday: 8:00 am - 5:00 pm

Website: <http://www.careertrack.org/main.htm>

Services: Pay unemployment compensation benefits to eligible claimants and refer qualified job applicants to employers placing valid job openings with our agency; Linkages with most other human resource agencies in Butler County which can be helpful in overcoming barriers to employment/ re-employment

Fee Policy: Free

Butler County Children & Youth

124 West Diamond Street
Butler, PA 16003

Geographic Area Served: Butler County

Telephone: 724-284-5156

Office Hours: Monday – Friday: 8:30 am - 4:30 pm

Website: <http://www.co.butler.pa.us/butler/cwp/view.asp?a=1475&q=571434>

Services: The goal of the agency is to provide social services which support, supplement or substitute for parental care and supervision for the purpose of (1) preventing or remedying, or assisting in the solution of problems which may result in neglect, abuse, exploitation or delinquency of children; (2) protecting and caring for homeless, abused, dependent or neglected children; (3) prevention of the family breakdown, whenever possible, in the attempt to keep children in their home.

Butler County Children & Youth continued

To meet these goals, the following services are provided:

- Information (Intake)
- Screening
- Referral
- Protective Services
- Family Counseling
- Service to unwed parents
- Family Preservation
- Group/Residential Placement

Eligibility: Families with children under 18 years of age; children under 18 years of age; individuals and families wishing to adopt children; individuals wishing to be foster parents.

Butler County Community College Adult Literacy Program

College Drive Oak Hills
PO Box 1203
Butler, PA 16003

Geographic Area Served: Butler County

Telephone: 724-287-8711 ext. 350

Office Hours: Monday – Friday: 8:00 am - 4:00 pm

Website: <http://www.bc3.edu/communityed/adultliteracy.asp>

Services: Adult Basic Education, English as a Second Language (ESL) and General Education Diploma (GED)

Fee Policy: Free

Eligibility: Adults 16 years and older who are not participating in a public school program

Butler County Cooperative Extension of Penn State

101 Motor Pool Way
Butler, PA 16001

Geographic Area Served: Butler County

Telephone: 724-287-4761

Office Hours: Monday – Friday: 8:30 am - 4:00 pm

Website: <http://butler.extension.psu.edu>

Services: Penn State Cooperative Extension in Butler County gives local residents easy access to the resources and expertise of the Pennsylvania State University. Through educational programs, publications, and events, cooperative extension agents deliver unbiased, research-based information to Butler County citizens. People can participate by attending workshops, learning from demonstrations, attending individual and group meetings, volunteer programs, and much more.

Program Areas:

Agriculture – Dairy, Livestock, Agronomy, Fruit and Vegetable, Farm Management.

Family Living – Expanded foods and nutrition, education program

- Nutrition, health & food safety
- Family strengths
- Parenting education
- Money Management
- Care giving for children and elderly
- Water quality

4-H and Youth Development

Community Development

Fee Policy: Free

Eligibility: All residents of Butler County

Butler County Children's Center, Inc

139 Rieger Road
Butler, PA 16001

Geographic Area Served: Butler County

Telephone: 724-287-2761

Office Hours: Monday – Friday: 7:30 am - 4:30 pm

Website: <http://bcccinc.org>

Services:

- Head Start
- Early Head Start
- Pre-K Counts
- Day Care

Fee Policy: Program Specific

Butler County Family YMCA

339 N. Washington Street
Butler, PA 16001

Geographic Area Served: Butler County

Telephone: 724-287-4733

Office Hours: Monday – Saturday: 5:30 am - 9:30 pm (Locker Rooms close at 10:00 PM) Closed on Sundays

Website: <http://bcfymca.org>

Services: Child care; aquatics; fitness; Big Brother/Big Sister programs; physical education

Fee Policy: Program Specific

Eligibility: Anyone

Butler County Mental Health/Mental Retardation

2nd Floor County Government Center
124 West Diamond Street
Butler, PA 16003

Geographic Area Served: Butler County

Telephone: 724-284-5114

Office Hours: Monday – Friday: 8:30 am - 4:30 pm

Website: <http://www.co.butler.pa.us/butler/cwp/view.asp?a=1501&q=608359>

Services: It is the mission of the Butler County Mental Health and Mental Retardation Program to ensure that there is a comprehensive array of services for children and adults with special needs that promotes their quality of life and enables them to participate as productive members of our community.

Fee Policy: Liability is determined through the Base Service Unit at the Irene Stacy Center

Eligibility: Residents of Butler County. MR services must have diagnosis of mental retardation. MH/D & A must be an identified need for those services.

Butler County Red Cross

312 Mercer Street
Butler, PA 16001

Geographic Area Served: Butler County

Telephone: 724-283-2810

Office Hours: Monday – Friday: 9:00 am - 4:00 pm • 24 Hours for Emergencies

Website: <http://butlerredcross.org>

Services: Disaster services including Emergency Assistance toward food, clothing, shelter immediately after a disaster; Information and referral

Fee Policy: Program Specific

Eligibility: Program Specific

Butler Transit Authority “The Bus”

201 South Main Street, Suite 102
Butler, PA 16001

Geographic Area Served: City of Butler and Butler Township

Telephone: 724-283-0445

Office Hours: Monday – Friday: 5:45 am - 5:00 pm Saturday: 9:30 am - 3:30 pm

Website: <http://thebusbutlerpa.com>

Services: Transportation for the City of Butler and Butler Township

Fee Policy: One Dollar for a one-way trip; discount passes are available (12 rides for \$10.00). Children under the age of 6 ride free; ages 7-12 is \$.50

Eligibility: Senior citizens 65 years or older ride free with a Senior Citizen Bus Pass.

Career Opportunities for the Disabled

Pullman Center
112 Hollywood Drive, Suite 101
Butler, PA 16001

Geographic Area Served: Butler County

Telephone: 724-431-4060

Office Hours: Monday – Friday: 8:00 am - 4:00 pm

Website: <http://www.tricountycareerlink.org/butler/index.php>

Services: Supportive employment:

- Job Matching
- Job Development
- Resume Writing
- Coordination of Services among other agencies
- Mobility Training
- Advocacy on the Job
- Interviewing Skills

Fee Policy: No fee unless OVR determines person has to pay part of cost. BSU no fee

Eligibility: Referral from either BSU or OVR

Center for Community Resources, Inc.

121 Sunnyview Circle, Suite 131
Butler, PA 16001

Geographic Area Served: Butler County

Telephone: 724-431-0095

Office Hours: Monday – Friday: 8:30 am - 4:30 pm

Website: www.ccrinfo.org

Services: The mission of Center for Community Resources is to make a positive difference in every day lives by connecting people to a network of supports and services essential for actively learning, working and living in the community.

The agency’s goal is to coordinate supportive services for individuals and families seeking information & referral for mental health, mental retardation, substance abuse and other human service needs. We are an integrated point of contact working in collaboration with other human service agencies to identify needs in the community and effectively respond to assist anyone seeking help.

Down Syndrome Center at Children's Hospital

3420 Fifth Avenue
Pittsburgh, PA 15213

Geographic Area Served: Western PA

Telephone: 412-692-7963

Website: <http://www.chp.edu/CHP/downsyndrome>

Policy Statement: The Down Syndrome Group of Western PA and the Down Syndrome Center at Children's Hospital of Pittsburgh are interested in and work toward enhancing the lives of individuals who have Down Syndrome. We provide information on educational, vocational, medical, social, adult and legal issues which may benefit children and adults who have Down Syndrome. However, we do not support or endorse specific therapies or programs.

Mission Statement: The mission statement of the Down Syndrome Center is to educate families and others about Down Syndrome and related issues via quarterly newsletters, an annual conference, and packets of information for new parents. The mission of the Down Syndrome Center is to provide medical and developmental assessments and family, behavioral, psychology, and psychiatric services to individuals of all ages who have Down Syndrome and/or their families. Research, writing articles about Down Syndrome and related issues, and teaching medical residents and other professionals are also important services offered. The center is associated with the Ohio-Pennsylvania Down Syndrome Network, The National Down Syndrome Congress, The National Down Syndrome Network, The National Down Syndrome Society and The Down Syndrome Medical Interest Group.

Homeless Assistance Program (HAP)

Geographic Area Served: Butler County

Telephone: VOICE 724-776-6790
The Lighthouse 724-898-4673
Catholic Charities 724-287-4011

Website: <http://www.co.butler.pa.us/butler/cwp/view.asp?A=1500&Q=607736>

Services: The intent of the Homeless Assistance Program (HAP) is to make available a Continuum of Services to persons who are at risk of becoming homeless (near homeless) or who are homeless. Participants must demonstrate that with the prevention and intervention services provided by the HAP service components, they would be able to meet their basic needs in the immediate and near future.

Housing Authority of the County of Butler

114 Woody Drive
PO Box 1917
Butler, PA 16001

Geographic Area Served: Butler County

Telephone: 724-287-6797 or 1-800-433-6327

Office Hours: Monday – Friday: 8:30 am - 4:30 pm

Website: <http://www.housingauthority.com>

Services: Providing safe, decent and affordable housing to eligible low-income families and individuals in Butler County – Equal Housing Opportunity

Fee Policy: Monthly rent does not exceed 30% of the applicant's adjusted gross household income

Eligibility: Applicant must meet financial and/or other eligibility criteria

Irene Stacy Community Mental Health Center (Base Service Unit)

112 Hillvue Drive
Butler, PA 16001

Geographic Area Served: Butler County

Telephone: 724-287-0791

Office Hours: Monday – Friday: 9:00 am - 5:00 pm

Website: <http://irenestacy.com>

Services:

- Intake, assessment and referral to county funded and community-based services available to mentally retarded and mental health
- Monitoring the county services individual is involved with
- Maintaining a minimum of quarterly contacts and updating annual life management plans for individuals involved in services

Fee Policy: No costs for mental retardation/Sliding scale for mental health services

Eligibility: Must have diagnosis of mental retardation – determined by an IQ of less than 70. DSM IV diagnosis for mental health services.

Lifesteps

383 New Castle Road
Butler, PA 16001

Geographic Area Served: Mercer, Butler, Beaver, Armstrong, Lawrence, Indiana, and Westmoreland Counties

Telephone: 724-283-1010

Office Hours: Monday – Friday: 7:00 am - 5:30 pm

Website: www.lifesteps.net

Services: Community Living Arrangements – C.L.A; Adult Training Facility; Speech and Hearing; Geriatric Day Program; Child Care and Preschool

Fee Policy: Community Living Arrangement – Referred by Mental Health/Mental Retardation (MH/MR) Offices; Adult Training Facility – Referred by MH/MR Offices; Speech and Hearing – based on a sliding scale.

Eligibility: Community Living Arrangement – Referral through Base Service Unit; Adult Training Facility- Referral through MH/MR; Speech/Hearing Services – Available for all speech and language needs.

Mental Health Association in Butler County

140 North Elm Street
Butler, PA 16001

Geographic Area Served: Butler County

Telephone: 724-287-1965 or 888-329-0468

Office Hours: Monday – Friday: 8:30 am - 4:30 pm

Website: <http://mhabutler.org>

Services: Evening support groups; children's programming; some Saturday programming; Case Advocacy; Representative Payee; COMPEER; Educational Advocacy; Child Care Information and Referral Services

Fee Policy: No fee, except for special projects

Eligibility: Most programs are for individuals who have a mental illness diagnosis. The Rep Payee is for any individual with an MH or MR diagnosis, and elderly referred through Area Agency on Aging Case Management

Midwestern Intermediate Unit IV

453 Maple Street
Grove City, PA 16127-2399

Geographic Area Served: Butler, Lawrence, and Mercer Counties

Telephone: 724-458-6700

Office Hours: Monday – Friday: 8:00 am - 4:00 pm

Website: www.miu4.k12.pa.us

Services: Midwestern Intermediate Unit IV (MIU 4) provides programs and services to the 27 school districts, 3 vocational schools and the nonpublic schools in Butler, Lawrence and Mercer Counties. A variety of consultative, advisory and educational programs and services are offered in the following areas: Curriculum, Instruction & Assessment, Continuing Education, Education Research and Planning, Instructional Materials, Distance Education, Nonpublic School Services, Technology and Information Services, and Special Education. Communications & Publications, Arts in Education, MIU IV also operates a variety of State and Federal programs including a Teen Parenting Program, Child Care Information Services and the Frew Mill School at the Youth Development Center, New Castle, PA.

Serving Students:

Special Education Programs: Acute Partial Hospitalization, Autistic Support, Community Schools, Early Intervention (EI), Emotional Support, Hearing Impaired Support, Language Support, Learning Support, Life Skills Support, Multihandicapped Support, Related Speech & Language Support, and Vision Support. Special Education Support Services: Academic Games for the Gifted, Assistive Technology, Audiological Services, Community Based Instruction, Central Auditory Processing Evaluations, Dysphagia Evaluations, Extended School Year Program, Instruction in the Home, Local Task Force, Orientation & Mobility Services, Physical/Occupational Therapy, Preschool Connection, Psychological Services, Social Work Services and Training & Consultation.

Enrichment opportunities for students include Kids on the Block and the annual Very Special Arts exhibit.

Office for the Deaf and Hearing Impaired (ODHI)

1308 Labor and Industry Building
Seventh & Foster Streets
Harrisburg, PA 17120

Geographic Area Served: State of Pennsylvania

Telephone: 800-233-3008

Office Hours: Monday – Friday: 8:30 am - 5:00 pm

Website: http://www.dli.state.pa.us/portal/server.pt/community/l_i_home/5278

Services: Provides information, referral and advocacy; Acts as a clearing house of information about deafness and hearing loss

Office of Vocational Rehabilitation (OVR)

100 Margaret Street
New Castle, PA 16101

Geographic Area Served: Butler, Lawrence, Armstrong and Beaver Counties

Telephone: 724-656- 3070 or 800-442-6379

Office Hours: Monday – Friday: 8:00 am - 4:30 pm

Services: Vocational Rehabilitation Services to individuals with disabilities. Services available include, but are not limited to: Diagnostic Services, Vocational Evaluation, Counseling and Guidance, Restoration Services, Training and Job Placement Assistance, depending upon need.

Fee Policy: No charge for applying for services, diagnostic service, vocational evaluation counseling or job placement assistance. For other services, eligible individuals may have to contribute to the cost of OVR services.

Eligibility: Must have a disability (a physical, mental or emotional problem) and the disability must cause a vocational impairment

Salvation Army

313 Cunningham Street
Butler, PA 16001

Geographic Area Served: Butler County

Telephone: 724-287-5532

After hours: 724-981-5582

Office Hours: Monday – Friday: 9:00 am - 4:00 pm

Services: Call for Services, however some that are provided are:

- Family Counseling
- Youth Services
- Worship Center
- Transient Services (No Local Address)
- Emergency Housing
- Emergency Food Assistance

Eligibility: Program Specific

Social Security Administration

220 South Main Street
Butler, PA 16001

Geographic Area Served: Butler County

Telephone: 800-772-1213

Office Hours: Monday – Friday: 9:00 am - 4:00 pm

Services: Retirement Benefits; Medicare Coverage; Supplemental Security Income (SSI); Social Security Numbers

Fee Policy: Free

Spina Bifida Association of Western PA

1158 Dutilh Road
Mars, PA 16046

Geographic Area Served: 28 counties in Western Pennsylvania and bordering counties in NY, OH and WV

Telephone: (724) 934-9600 or 800-243-5787

Office Hours: Monday – Friday: 9:00 am - 5:00 pm

Website: www.sbawp.org

Services: Developmental camping program, ages 7 thru adult; School consultation services; Gatehouse Independence Training Program- Residential Facility (18 weeks); Woodlands Weekend Retreats- weekend programs twice a month for teens and adults with Spina Bifida.

Fee Policy: Varies depending on program.

Eligibility: Persons with Spina Bifida

WIC Program Adiago Health

Geographic Area Served: Butler County

Telephone: 800-WIC-WINS

Website: www.PAWIC.com

Services:

- Breast feeding Information and Support
- Health Screening and Referrals
- Supplemental Food Packages
- Nutrition and Education

Eligibility: Income eligibility standards are effective for all PA pregnant and postpartum women, infants, and children up to age five, and for recertifying current participants at the time of their next certification after May 1, 2009.



Midwestern Intermediate Unit IV

453 Maple Street

Grove City, PA 16127-2399

724-458-6700

www.miu4.k12.pa.us

Equal Opportunity Employer
